



# Bub3 Polyclonal Antibody

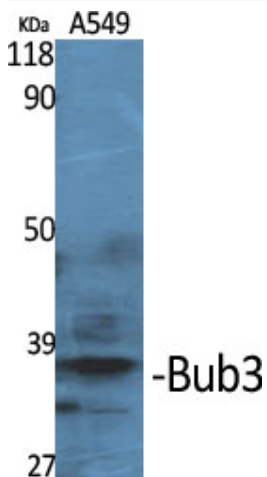
<b>Catalog No</b>	YP-Ab-16669
<b>Isotype</b>	IgG
<b>Reactivity</b>	Human;Mouse;Rat
<b>Applications</b>	WB;IHC;IF;ELISA
<b>Gene Name</b>	BUB3
<b>Protein Name</b>	Mitotic checkpoint protein BUB3
<b>Immunogen</b>	The antiserum was produced against synthesized peptide derived from human BUB3. AA range:279-328
<b>Specificity</b>	Bub3 Polyclonal Antibody detects endogenous levels of Bub3 protein.
<b>Formulation</b>	Liquid in PBS containing 50% glycerol, 0.5% BSA and 0.02% sodium azide.
<b>Source</b>	Polyclonal, Rabbit,IgG
<b>Purification</b>	The antibody was affinity-purified from rabbit antiserum by affinity-chromatography using epitope-specific immunogen.
<b>Dilution</b>	Western Blot: 1/500 - 1/2000. Immunohistochemistry: 1/100 - 1/300. Immunofluorescence: 1/200 - 1/1000. ELISA: 1/5000. Not yet tested in other applications.
<b>Concentration</b>	1 mg/ml
<b>Purity</b>	≥90%
<b>Storage Stability</b>	-20°C/1 year
<b>Synonyms</b>	BUB3; Mitotic checkpoint protein BUB3
<b>Observed Band</b>	40kD
<b>Cell Pathway</b>	Nucleus. Chromosome, centromere, kinetochore . Starts to localize at kinetochores in prometaphase I (Pro-MI) stage and maintains the localization until the metaphase I-anaphase I (MI-AI) transition. .
<b>Tissue Specificity</b>	Brain,Epithelium,Placenta,Spleen,Testis,
<b>Function</b>	function:Required for kinetochore localization of BUB1.,similarity:Belongs to the WD repeat BUB3 family.,similarity:Contains 5 WD repeats.,subunit:Interacts with BUB1 and BUBR1.,
<b>Background</b>	This gene encodes a protein involved in spindle checkpoint function. The encoded protein contains four WD repeat domains and has sequence similarity with the yeast BUB3 protein. Alternate transcriptional splice variants, encoding different isoforms, have been characterized. [provided by RefSeq, Jul 2008],
<b>matters needing attention</b>	Avoid repeated freezing and thawing!



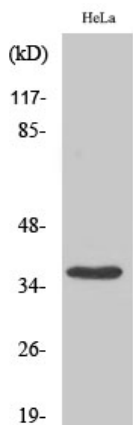
## Usage suggestions

This product can be used in immunological reaction related experiments. For more information, please consult technical personnel.

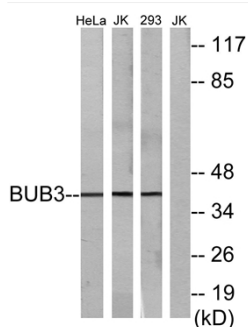
## Products Images



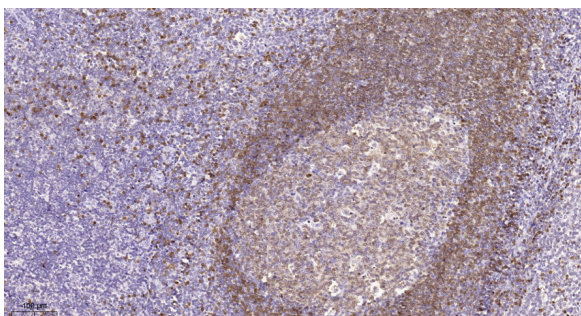
Western Blot analysis of various cells using Bub3 Polyclonal Antibody



Western Blot analysis of 293 cells using Bub3 Polyclonal Antibody



Western blot analysis of lysates from HeLa cells, Jurkat cells, and 293 cells, using BUB3 Antibody. The lane on the right is blocked with the synthesized peptide.



Immunohistochemical analysis of paraffin-embedded human tonsil. 1, Tris-EDTA, pH 9.0 was used for antigen retrieval. 2 Antibody was diluted at 1:200 (4°C overnight). 3, Secondary antibody was diluted at 1:200 (room temperature, 45 min).